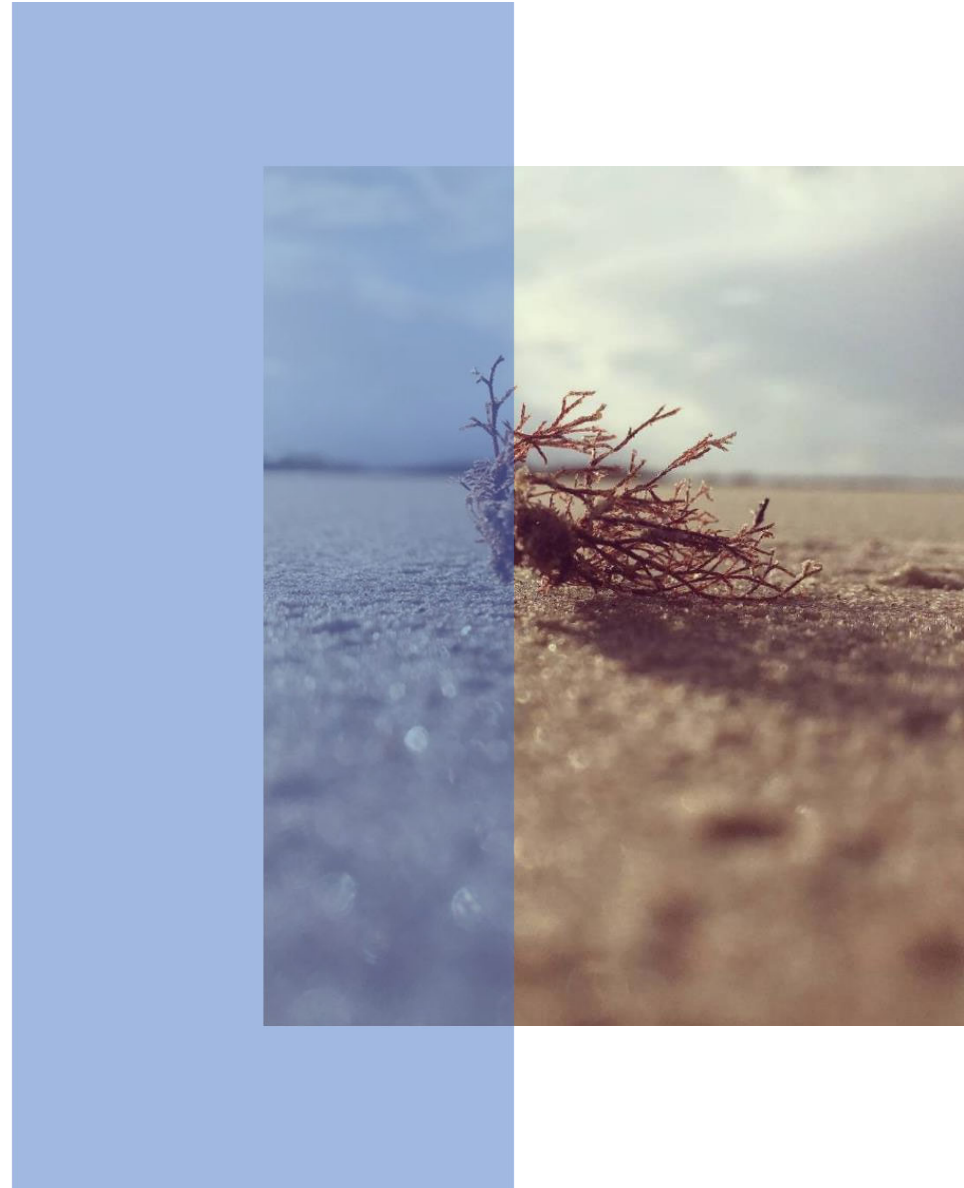


Existing Conditions Discussion

BAR HARBOR, MAINE





Phase 1:
Existing Conditions Analysis:

Collect data and Review text from 2007 Plan.
Complete GIS Analysis. Discuss topics with CPC.
Create new topic profiles.

Phase 2:
Develop Goals, Objectives, Strategies, and Actions:

Engage the public and the CPC using data and questions generated during the Existing Conditions Analysis.

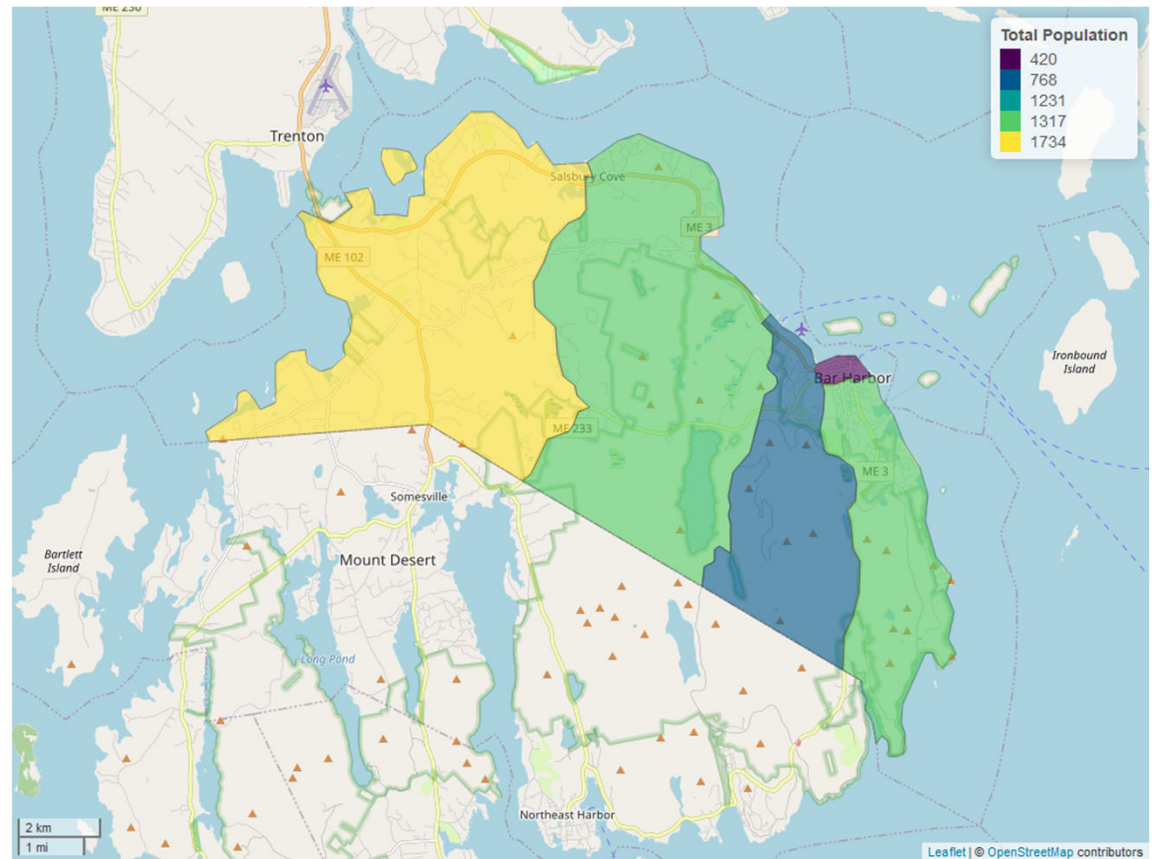
Phase 3:
Comprehensive Plan Writing:

Draft and format a new 2023 Plan based on what has been learned. Once approved create an executive summary and StoryMap.

POPULATION AND DEMOGRAPHICS

5,470 Total Population (2015 – 2019)

2,336 Households (2015 – 2019)



State of Maine Suggested Analysis:

Is the rate of population change expected to speed up or slow down?

How will this impact the demand for housing and municipal and school services?

Seasonal population trends, daytime population needs, etc.



Natural Resources

A scenic landscape featuring a sandy beach, a lake, and forested hills under a hazy sky. The foreground is filled with evergreen and autumn-colored trees. The text "Natural Resources" is overlaid in the center of the image.



Natural Resource Component of the Comprehensive Plan

- **Water Resources**

- State Goal: to protect the quality and manage the quantity of the State's water resources, including lakes, aquifers, great ponds, estuaries, rivers, and coastal areas.

- **Natural Resources**

- State Goal: to protect the State's other critical natural resources, including without limitation, wetlands, wildlife, and fisheries habitat, sand dunes, shorelands, scenic vistas, and unique natural areas.

- **Agricultural and Forest Resources**

- State Goal: to safeguard the State's agricultural and forest resources from development which threatens those resources.

- **Marine Resources**

- State Goal: to protect the State's marine resources industry, ports, and harbors from incompatible development and to promote access to the shore for commercial fishermen and the public.

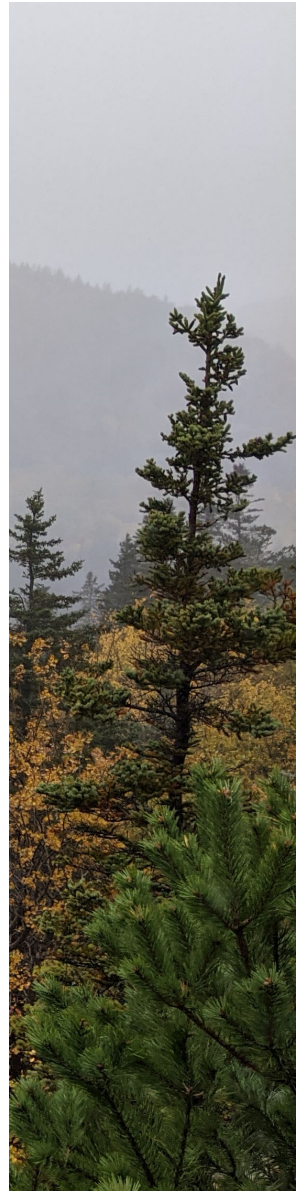
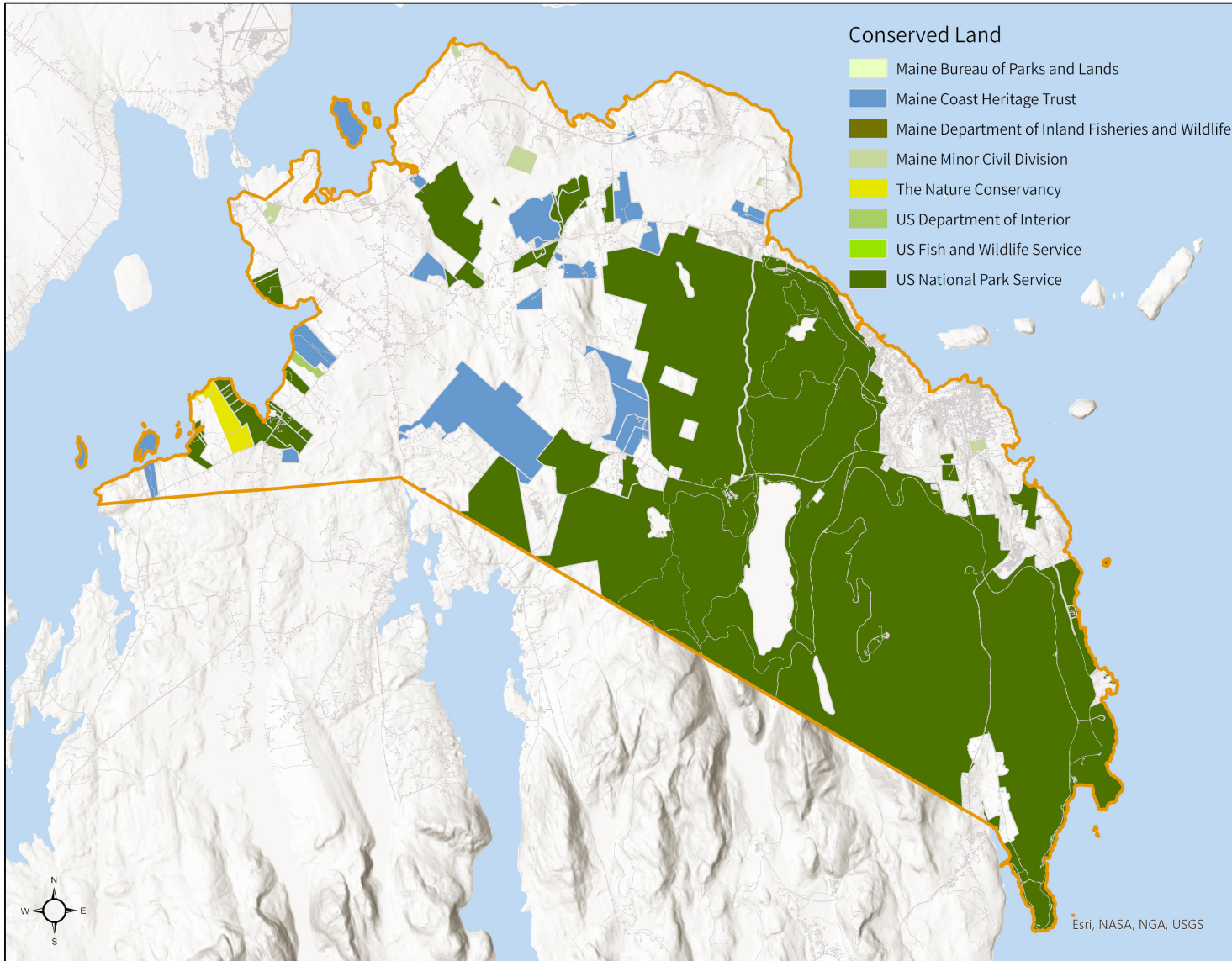


Critical Natural Resources

- Those that warrant protection from the negative impacts of development under federal or state law
 - Examples: Resource Protection Districts (Shoreland), wetlands of special significance, threatened, endangered, and special concern animal species, and more

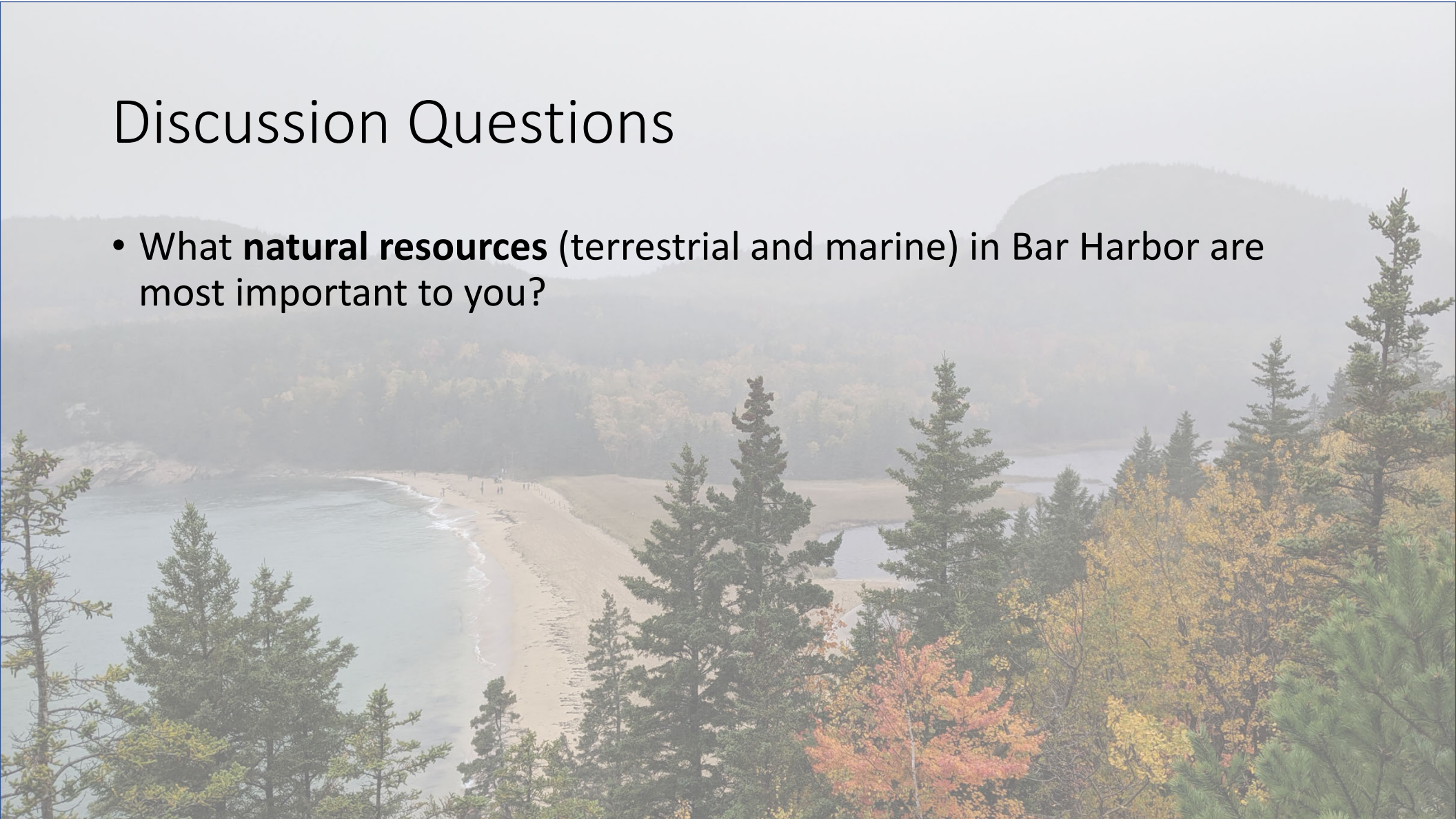
Important Natural Resources

- Areas in the community important for strategic conservation planning purposes but not classified as critical.
 - Examples: Large habitat blocks, habitat connections, exemplary communities, and more



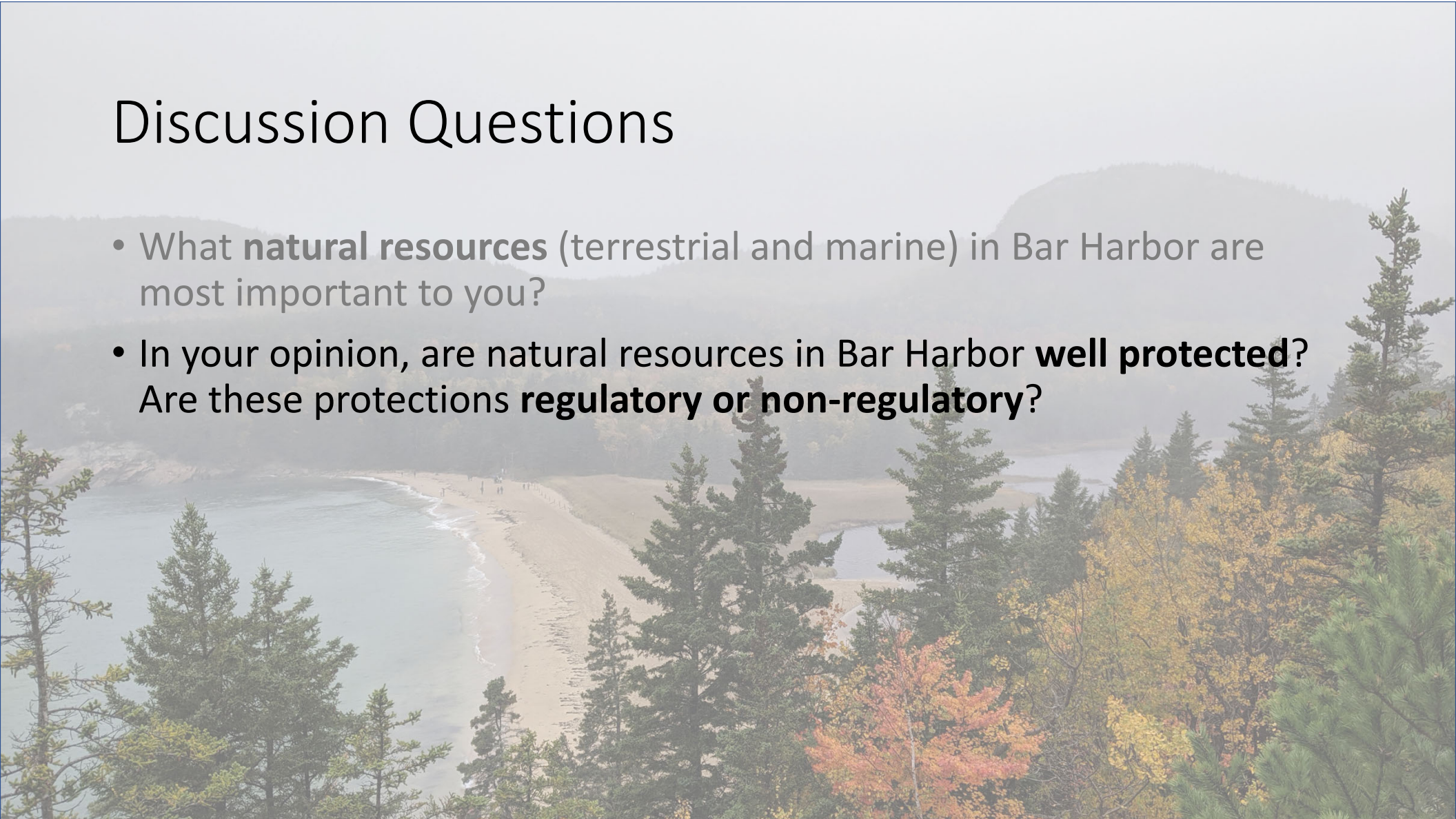
Discussion Questions

- What **natural resources** (terrestrial and marine) in Bar Harbor are most important to you?



Discussion Questions

- What **natural resources** (terrestrial and marine) in Bar Harbor are most important to you?
- In your opinion, are natural resources in Bar Harbor **well protected**? Are these protections **regulatory or non-regulatory**?



Discussion Questions

- What **natural resources** (terrestrial and marine) in Bar Harbor are most important to you?
- In your opinion, are natural resources in Bar Harbor well protected? Are these protections **regulatory or non-regulatory**?
- In your opinion, what is the **role of the Town** in protecting natural resources in Bar Harbor? How should the Town collaborate with neighboring communities and the National Park Service?

Discussion Questions

- What **natural resources** (including terrestrial and marine) in Bar Harbor are most important to you?
- In your opinion, are natural resources in Bar Harbor well protected? Are these protections **regulatory or non-regulatory**?
- In your opinion, what is the **role of the Town** in protecting natural resources in Bar Harbor? How should the Town collaborate with neighboring communities and the National Park Service?
- What **threats** to natural resources are you most concerned about?



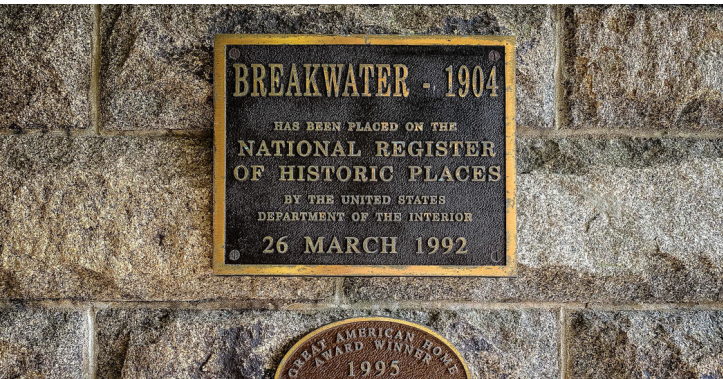
Historic and Archaeological Resources Discussion

Town of Bar Harbor Comprehensive Plan Committee Meeting
January 12, 2022



Historic and Archaeological Resources Component of the Comprehensive Plan

- State Goal: To preserve the State's historic and archaeological resources.
- Section includes an inventory and analysis of:
 - Local history and historic land use patterns
 - Location and condition of historic and archaeological resources, including buildings, stone walls, stone impoundments, farms, neighborhoods, villages, parks, Native American settlements, etc.



Historic and Archaeological Resources Component of the Comprehensive Plan

- Analysis of the Town's existing historic preservation programs and land use regulations, as well as an understanding of any issues, shortcomings, and strengths of said programs and regulations.
- Strategies and policy recommendations that enhance preservation of the Town's historic resources.

Discussion Questions

- How do you define Bar Harbor's **historic character, heritage, and sense of place**? How has Bar Harbor's historical land use pattern shaped the built environment and landscape today?

Discussion Questions

- How do you define Bar Harbor's **historic character, heritage, and sense of place**? How has Bar Harbor's historical land use pattern shaped the built environment and landscape today?
- In your opinion, are historic and archaeological resources **adequately protected** in Bar Harbor?

Discussion Questions

- How do you define Bar Harbor's **historic character, heritage, and sense of place**? How has Bar Harbor's historical land use pattern shaped the built environment and landscape today?
- In your opinion, are historic and archaeological resources **adequately protected** in Bar Harbor?
- In your opinion, how well do you think the Town **balances historic preservation goals** with other development related goals?

Discussion Questions

- How do you define Bar Harbor's **historic character, heritage, and sense of place**? How has Bar Harbor's historical land use pattern shaped the built environment and landscape today?
- In your opinion, are historic and archaeological resources **adequately protected** in Bar Harbor?
- In your opinion, how well do you think the Town **balances historic preservation goals** with other development related goals?
- Are there significant historic resources that you are aware of that have fallen into **disrepair**?

Discussion Questions

- How do you define Bar Harbor's **historic character, heritage, and sense of place**? How has Bar Harbor's historical land use pattern shaped the built environment and landscape today?
- In your opinion, are historic and archaeological resources **adequately protected** in Bar Harbor?
- In your opinion, how well do you think the Town is **balancing historic preservation goals** with other development related goals?
- Are there significant historic resources that you are aware of that have fallen into **disrepair**?
- How often are historic building, archaeological, and pre-archaeological surveys **inventoried** and **kept up to date**?